

Conexant Modem Module (V.92/V.34/V.32bis)

1. Features

- Modulations and protocols
 - ITU-T V.92 (V.92 model)
 - ◆ Modem-on-Hold (MOH)
 - ◆ Quick connect (QC)
 - ◆ PCM upstream
 - V.90 (V.92 model)
 - V.34 (V.92 and V.34 models)
 - V.32bis, V.32, V.22bis, V.22, V.23, V.21
 - V.23 reverse, V.23 half-duplex
 - Bell 212A/Bell 103
 - V.29 FastPOS
 - V.22bis fast connect
 - V.80 Synchronous Access Mode

- Data compression and error correction
 - V.44 data compression (V.92 model)
 - V.42bis and MNP 5 data compression
 - V.42 LAPM and MNP 2-4 error correction

- Fax modem send and receive rates up to 14.4 kbps
 - V.17, V.29, V.27 ter, and V.21 channel 2
 - EIA/TIA 578 Class 1 and T.31 Class 1.0

- Call Waiting (CW) detection and Type II Caller ID decoding during data mode

- Type I Caller ID (CID) decoding

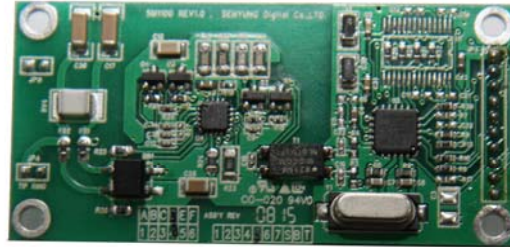
- Telephony/TAM
 - V.253 commands
 - 2-bit and 4-bit ADPCM, 4-bit IMA ADPCM, 8-bit and 16-bit linear PCM, and 8-bit μ -law and A-law PCM coding
 - 8 kHz sample rate
 - Concurrent DTMF, ring, and Caller ID detection

- DTE/host interface
 - Serial DTE interface
 - Direct Mode
 - Asynchronous Mode

- No external memory required

- Sixty-three embedded and upgradeable country profiles

- Serial NVRAM interface for optional permanent country profile storage



- Embedded AT commands

- SmartDAA
 - Extension pick-up detection
 - Digital line protection
 - Line reversal detection
 - Line-in-use detection
 - Remote hang-up detection
 - Worldwide compliance

- Selectable 28.224 MHz or 27.000 MHz frequency of operation

- Low power and voltage
 - Single +3.3V supply
 - Low power consumption mode
 - +3.3V I/O level

- Compact, robust board design
 - Small, low-profile modem packages
 - SmartDAA and DIB technologies
 - Reference design supports 5 kV isolation

- Small packages
 - CX93011 Modem: 20-pin QFN
 - CX20548 LSD: 16-pin QFN

2. Applications

- Set top boxes

- Point-of-Sale terminals

- ATM machines

- Metering terminals

- Video game consoles

- Internet appliances