

Test Report

No. : CE/2006/C6258

Date : 2006/12/28

Page : 1 of 3

TRIGON COMPONENTS INC.
939 MARINER STREET BREA, CALIFORNIA, CA 92821 U. S. A.



Report on the submitted sample said to be MULTILAYER CERAMIC CHIP CAPACITORS.

Style/Item No : CPH-
Sample Receiving Date : 2006/12/26
Testing Period : 2006/12/26 TO 2006/12/28

=====
Test Requested : In accordance with the RoHS Directive 2002/95/EC, and its amendment directives.

Test Method :
(1) With reference to BS EN 1122:2001, Method B for Cadmium Content. Analysis was performed by ICP-AES.
(2) With reference to US EPA Method 3050B for Lead Content. Analysis was performed by ICP-AES.
(3) With reference to US EPA Method 3052 for Mercury Content. Analysis was performed by ICP-AES.
(4) With reference to US EPA Method 3060A & 7196A for Hexavalent Chromium for non-metallic samples. Analysis was performed by UV/Vis Spectrometry.
(5) With reference to US EPA 3540C for PBBs/PBDEs Content. Analysis was performed by GC/MS.

Test Result(s) : Please refer to next page(s).


Daniel Yeh, M.R. / Operation Manager
Signed for and on behalf of
SGS TAIWAN LTD.

Test Report

No. : CE/2006/C6258

Date : 2006/12/28

Page : 2 of 3

TRIGON COMPONENTS INC.
939 MARINER STREET BREA, CALIFORNIA, CA 92821 U. S. A.



Test results by chemical method (Unit: mg/kg)

Test Item (s):	Method (Refer to)	Result	MDL
		No.1	
Cadmium (Cd)	(1)	n.d.	2
Lead (Pb)	(2)	n.d.	2
Mercury (Hg)	(3)	n.d.	2
Hexavalent Chromium (CrVI)	(4)	n.d.	2
Sum of PBBs	(5)	n.d.	-
Monobromobiphenyl		n.d.	5
Dibromobiphenyl		n.d.	5
Tribromobiphenyl		n.d.	5
Tetrabromobiphenyl		n.d.	5
Pentabromobiphenyl		n.d.	5
Hexabromobiphenyl		n.d.	5
Heptabromobiphenyl		n.d.	5
Octabromobiphenyl		n.d.	5
Nonabromobiphenyl		n.d.	5
Decabromobiphenyl		n.d.	5
Sum of PBDEs (Mono to Nona) (Note 4)		n.d.	-
Monobromobiphenyl ether		n.d.	5
Dibromobiphenyl ether		n.d.	5
Tribromobiphenyl ether		n.d.	5
Tetrabromobiphenyl ether		n.d.	5
Pentabromobiphenyl ether		n.d.	5
Hexabromobiphenyl ether		n.d.	5
Heptabromobiphenyl ether		n.d.	5
Octabromobiphenyl ether		n.d.	5
Nonabromobiphenyl ether		n.d.	5
Decabromobiphenyl ether		n.d.	5
Sum of PBDEs (Mono to Deca)		n.d.	-

Test Part Description:

NO.1 : MIXED ALL PARTS

Note : 1. mg/kg = ppm

2. n.d. = Not Detected

3. MDL = Method Detection Limit

4. Sum of Mono to NonaBDE & according to 2005/717/EC DecaBDE is exempt.

5. "-" = Not Regulated

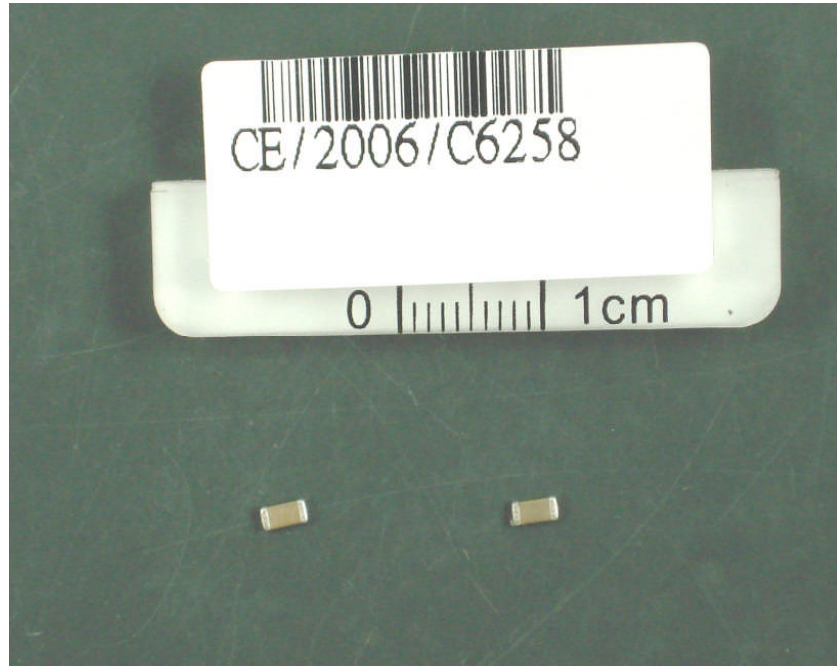
Test Report

No. : CE/2006/C6258

Date : 2006/12/28

Page : 3 of 3

TRIGON COMPONENTS INC.
939 MARINER STREET BREA, CALIFORNIA, CA 92821 U. S. A.



** End of Report **